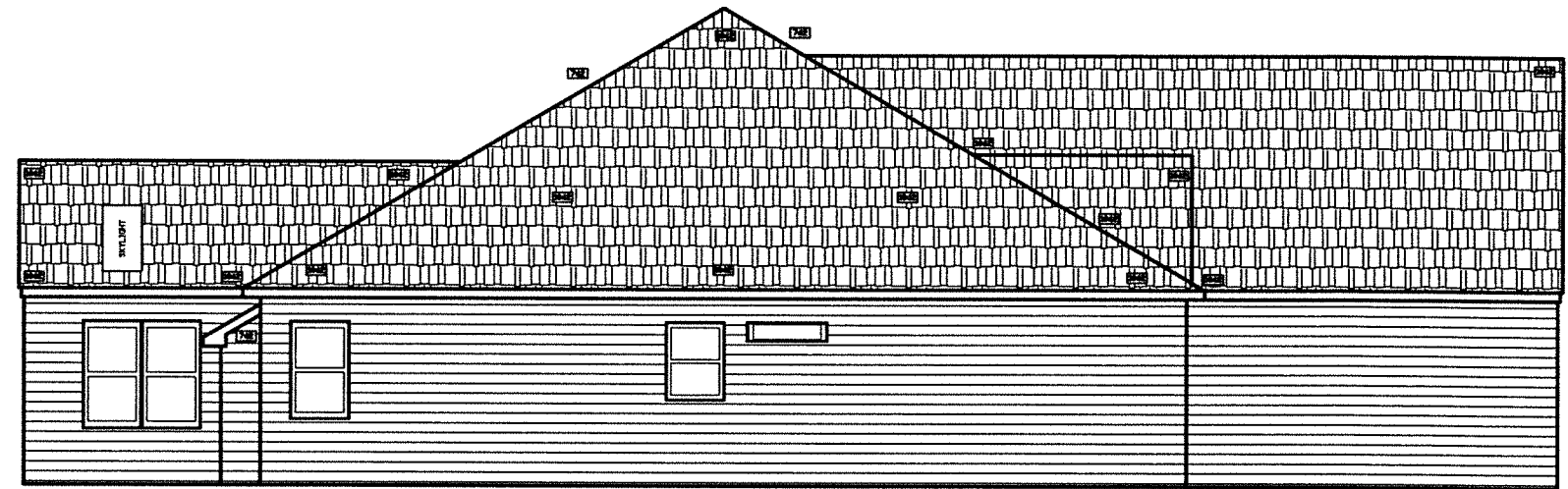




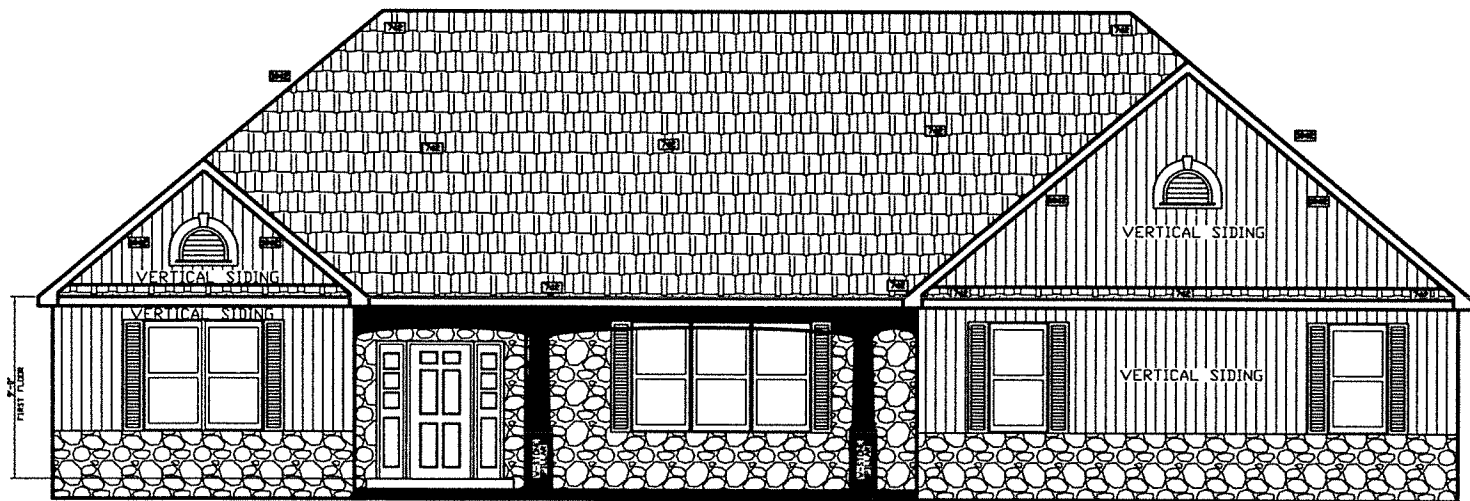
REAR ELEVATION

TRACEY RANCH BASEPLAN
GREEN VALLEY NORTH PHASE II
SCALE: 1/4"=1'-0"



LEFT SIDE ELEVATION

TRACEY RANCH BASEPLAN
GREEN VALLEY NORTH PHASE II
SCALE: 1/4"=1'-0"



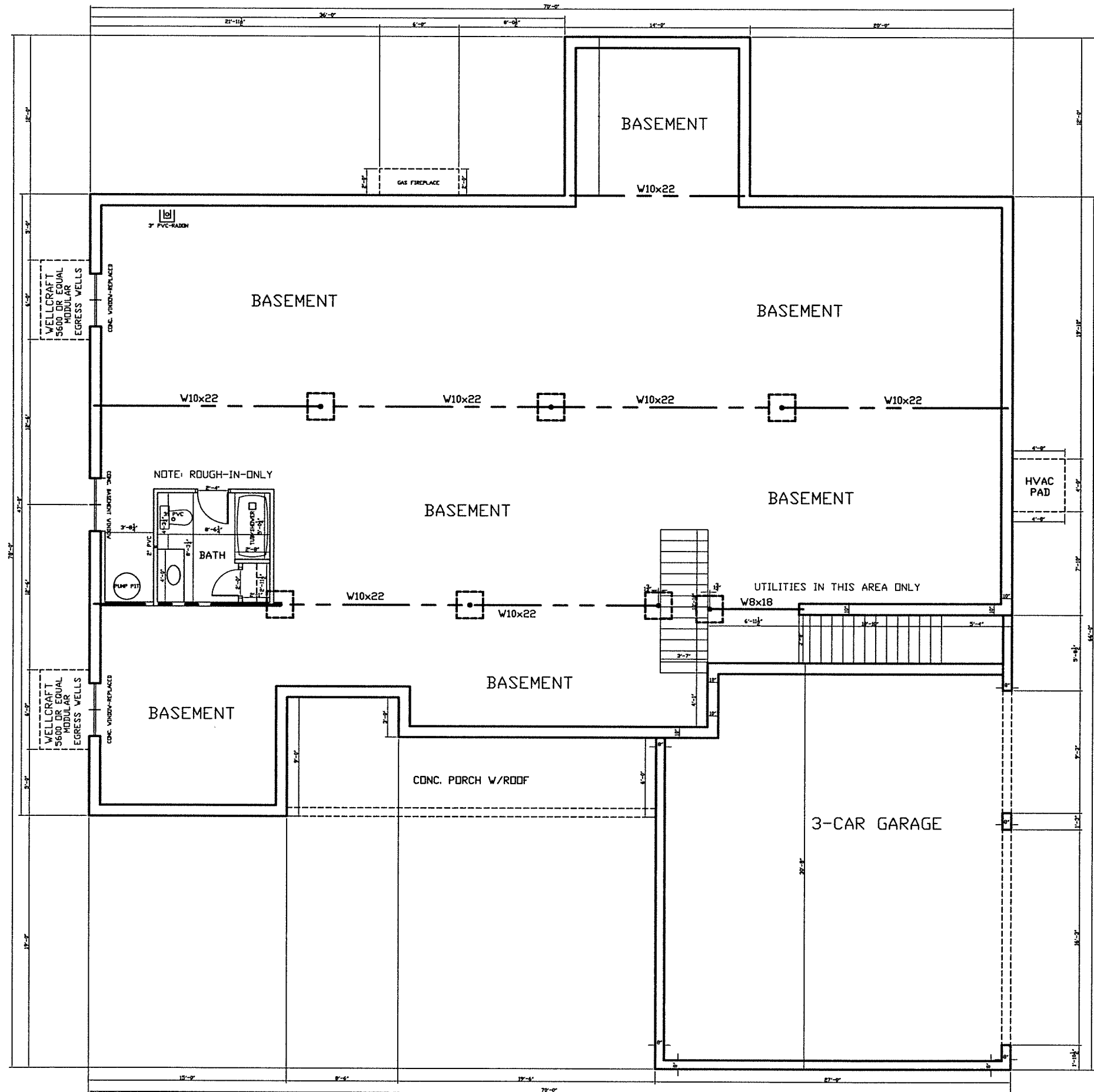
FRONT ELEVATION

TRACEY RANCH BASEPLAN
GREEN VALLEY NORTH PHASE II
SCALE: 1/4"=1'-0"



RIGHT SIDE ELEVATION

TRACEY RANCH BASEPLAN
GREEN VALLEY NORTH PHASE II
SCALE: 1/4"=1'-0"

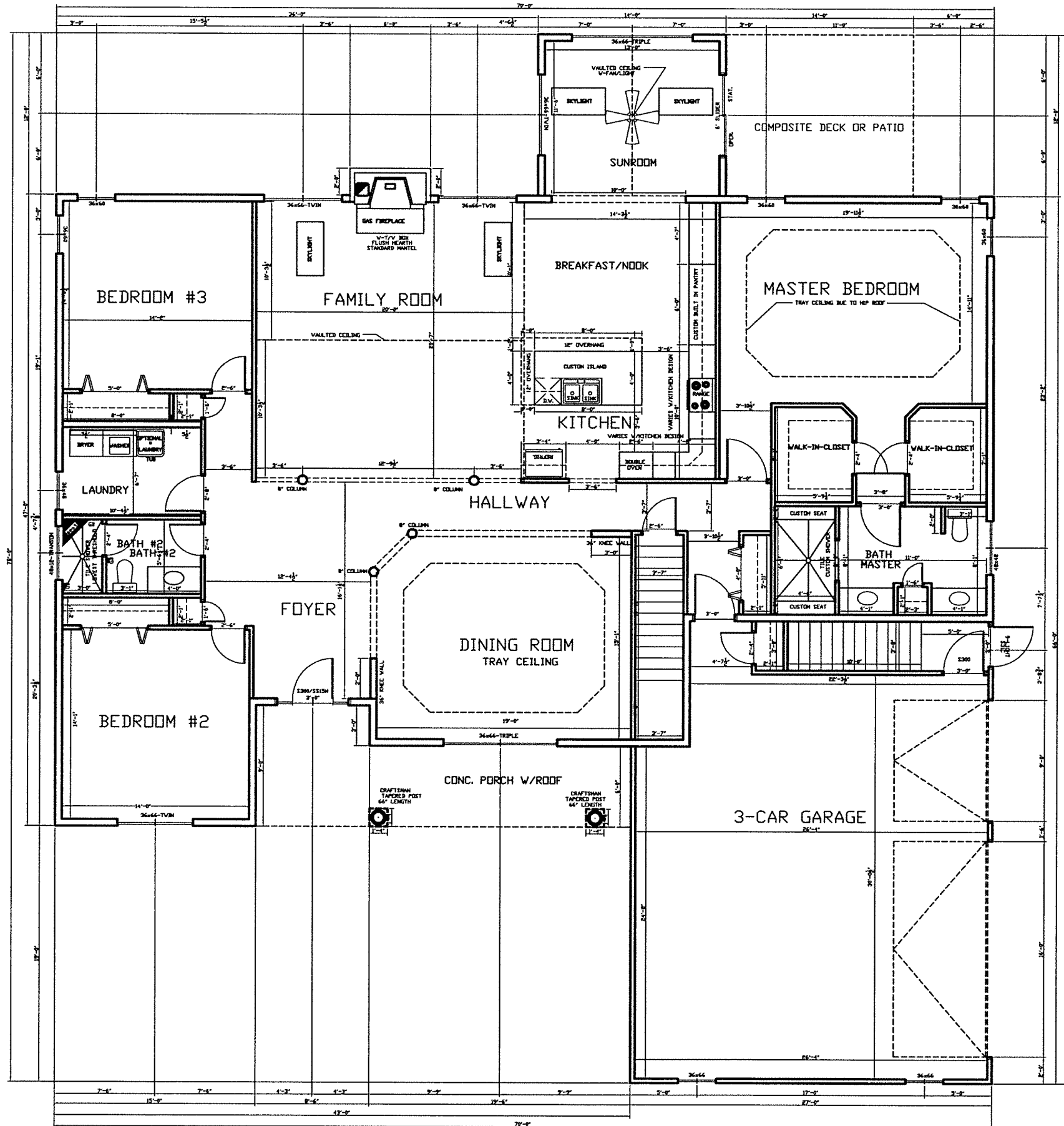


NOTE: 10" CONC WALLS UNLESS NOTED, SEE CROSS SECTION.

GARAGE RIGHT
SCALE: 1/4"=1'-0"

FOUNDATION PLAN

TRACEY RANCH BASEPLAN
GREEN VALLEY NORTH PHASE II



NOTE: ALL EXTERIOR WALL DIMENSIONS ARE 6" UNLESS NOTED.
 ALL INTERIOR WALL DIMENSIONS ARE 3-1/2" UNLESS NOTED.

FIRST FLOOR PLAN

GARAGE RIGHT
 SCALE: 1/4"=1'-0"

TRACEY RANCH BASEPLAN
 GREEN VALLEY NORTH PHASE II
 NOTE: LIVING SPACE=2896 SQ. FT. INCLUDES SUNROOM