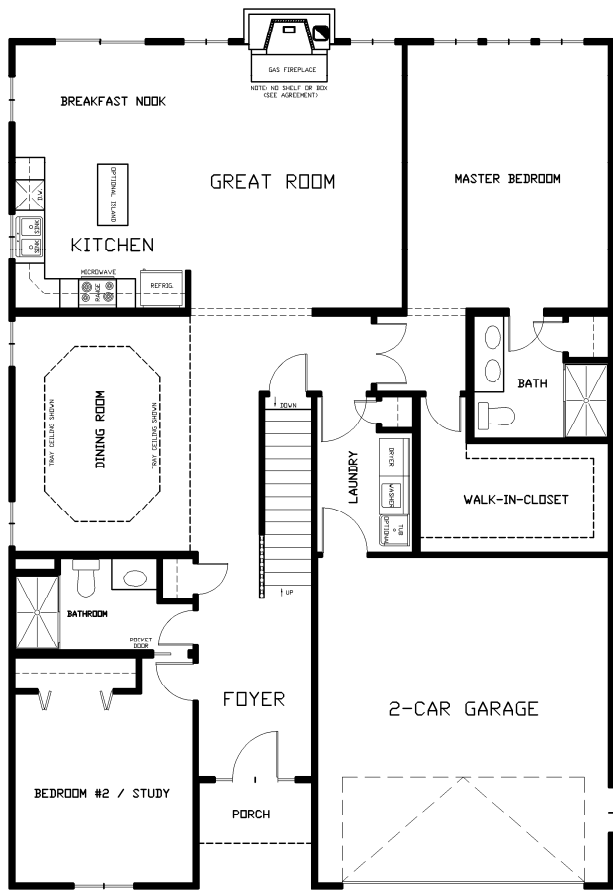




FRONT ELEVATION

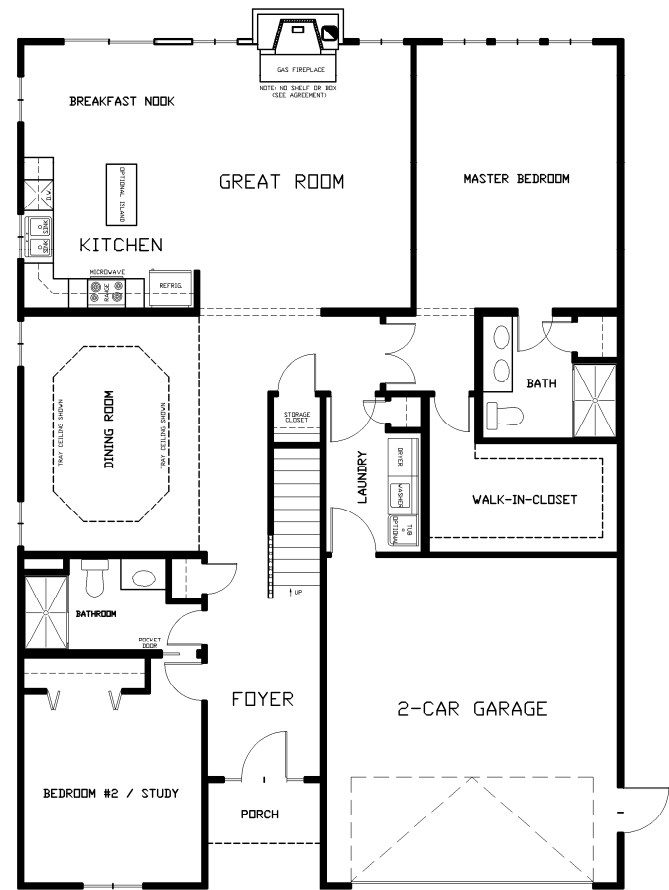
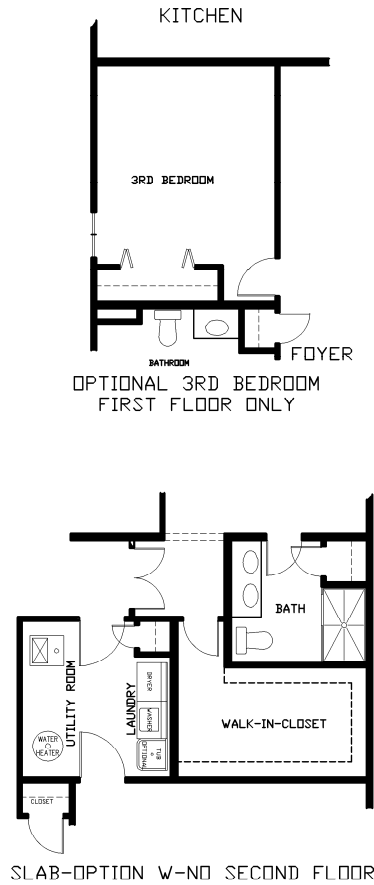
THE KENTON IV BASEPLAN GARAGE RIGHT

NOTE: OPTIONAL DORMER SHOWN, \$3,000.00
 NOTE: OPTIONAL PORCH COLUMNS @ FRONT DOOR (2) \$800.00



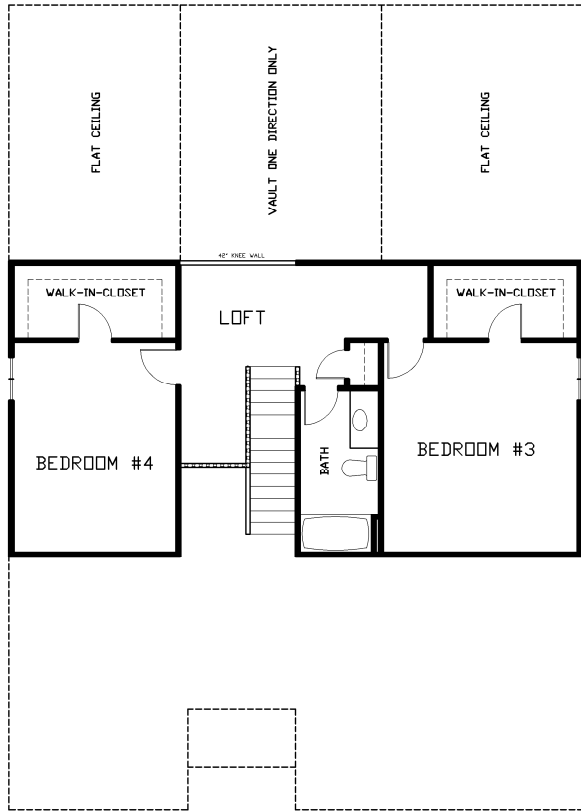
FIRST FLOOR PLAN

THE KENTON IV BASEPLAN
 FIRST FLOOR PLAN W-BASEMENT
 GARAGE RIGHT



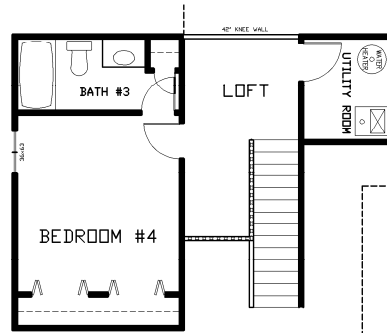
FIRST FLOOR PLAN

THE KENTON IV BASEPLAN
 FIRST FLOOR PLAN W-SLAB
 GARAGE RIGHT

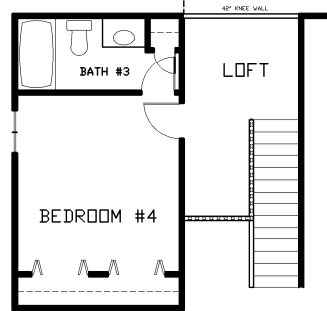


SECOND FLOOR PLAN

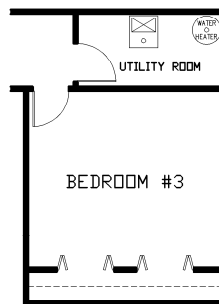
THE KENTON IV BASEPLAN
 OPTIONAL FULL SECOND FLOOR PLAN
 750 SQ. FT.
 GARAGE RIGHT



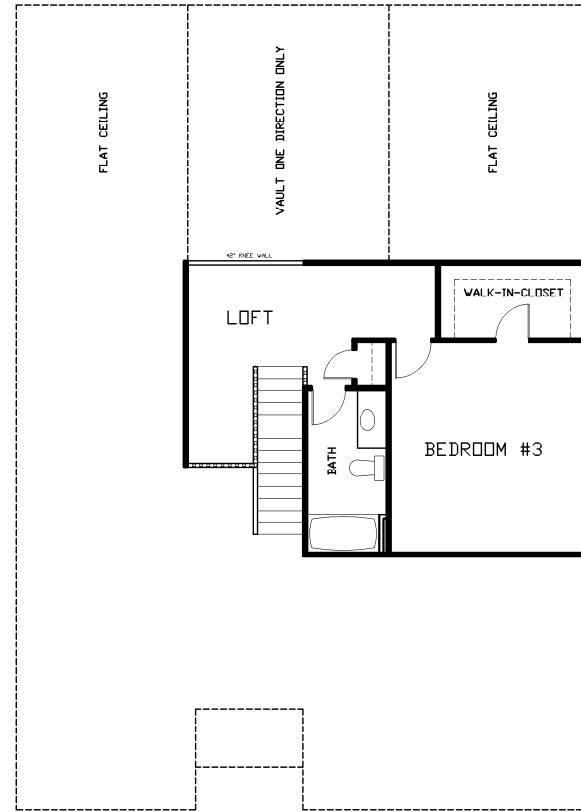
OPTION W-SLAB AND PARTIAL SECOND FLOOR
 390 SQ. FT.



OPTION V-BASEMENT AND PARTIAL SECOND FLOOR
 340 SQ. FT.



OPTION V-SLAB AND FULL SECOND FLOOR
 SQ. FT. SAME AS FULL SECOND FLOOR



SECOND FLOOR PLAN

THE KENTON IV BASEPLAN
 LARGER OPTIONAL PARTIAL SECOND FLOOR
 510 SQ. FT.
 GARAGE RIGHT

KITCHEN