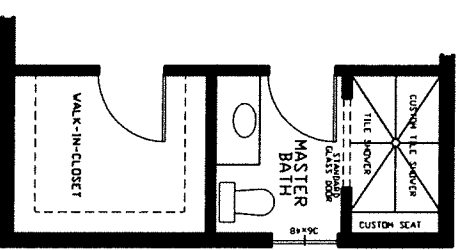
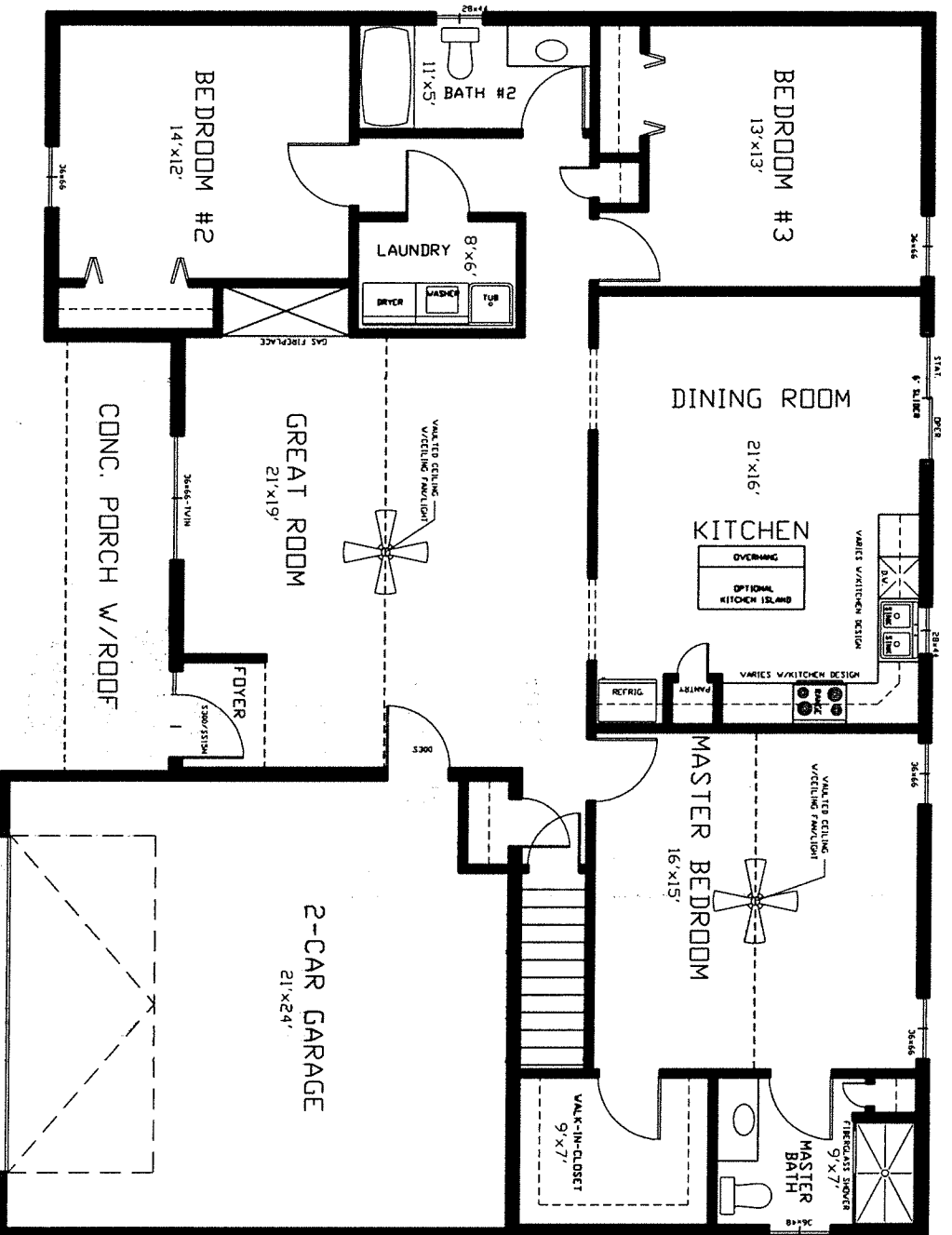


OPTIONAL ARCHED GARAGE DOOR FRAME SHOWN

FRONT ELEVATION

THE LILYFIELD RANCHER II BASEPLAN
HEIDELBERG CROSSING
GARAGE RIGHT

SCALE: 1/4"=1'-0"



OPTION CUSTOM SHOWER
MASTER BATH

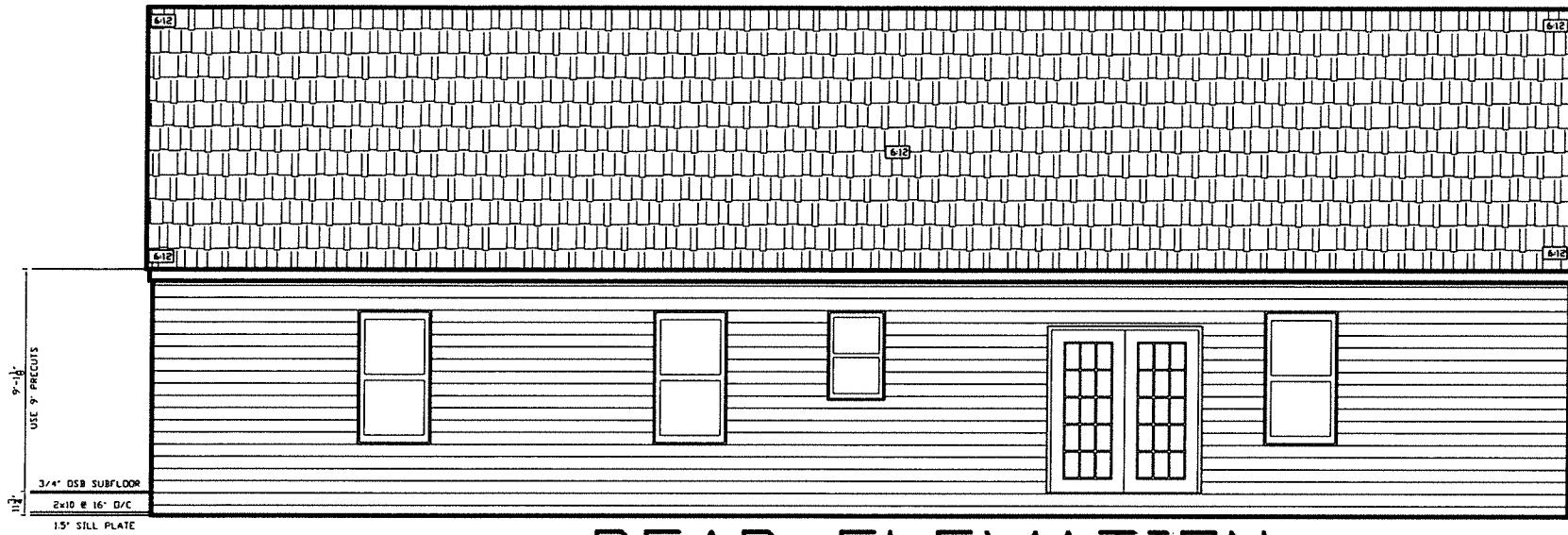
NOTE: ALL EXTERIOR WALL DIMENSIONS ARE 6" UNLESS NOTED.
ALL INTERIOR WALL DIMENSIONS ARE 3-1/2" UNLESS NOTED.

GARAGE RIGHT

SCALE: 1/4"=1'-0"

FIRST FLOOR PLAN

THE LILYFIELD RANCHER V BASEPLAN
HEIDELBERG CROSSING
1842 SQ. FT. FIRST FLOOR



REAR ELEVATION

THE LILYFIELD RANCHER II BASEPLAN
HEIDELBERG CROSSING
GARAGE RIGHT
SCALE: 1/4"=1'-0"



LEFT SIDE ELEVATION

THE LILYFIELD RANCHER II BASEPLAN
HEIDELBERG CROSSING
GARAGE RIGHT
SCALE: 1/4"=1'-0"



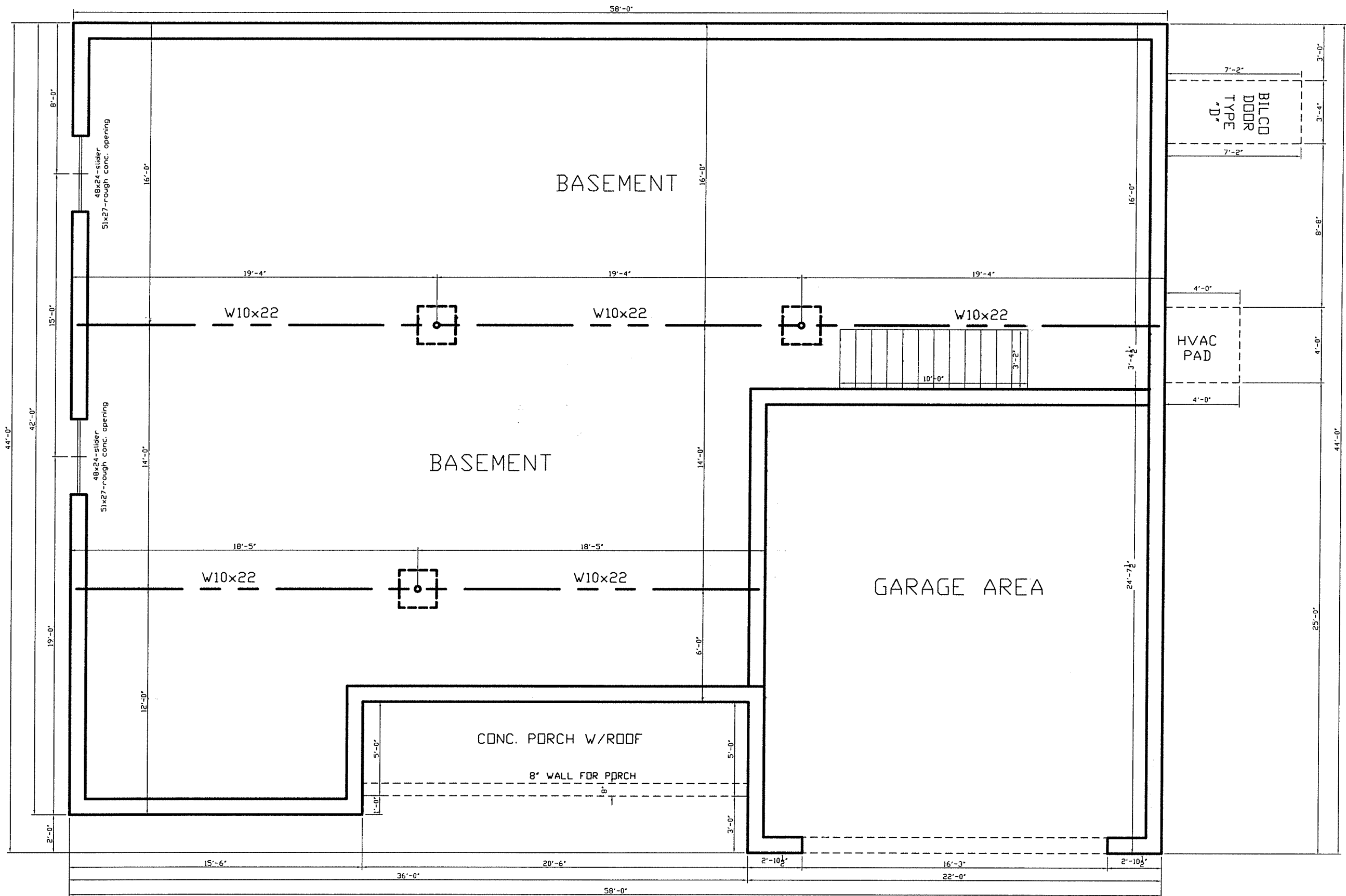
FRONT ELEVATION

THE LILYFIELD RANCHER II BASEPLAN
HEIDELBERG CROSSING
GARAGE RIGHT
SCALE: 1/4"=1'-0"



RIGHT SIDE ELEVATION

THE LILYFIELD RANCHER II BASEPLAN
HEIDELBERG CROSSING
GARAGE RIGHT
SCALE: 1/4"=1'-0"

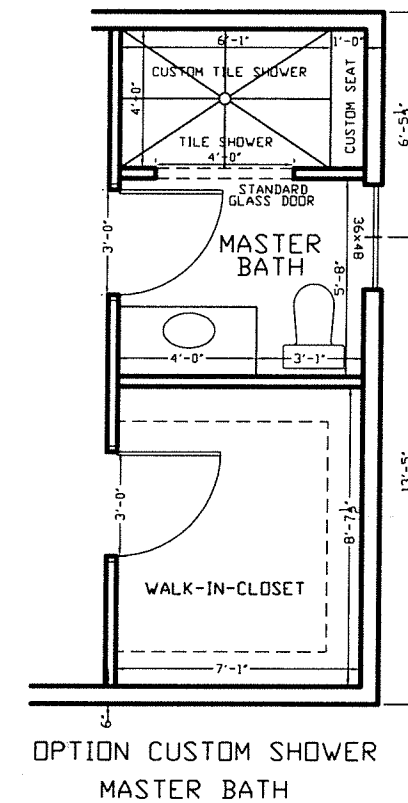
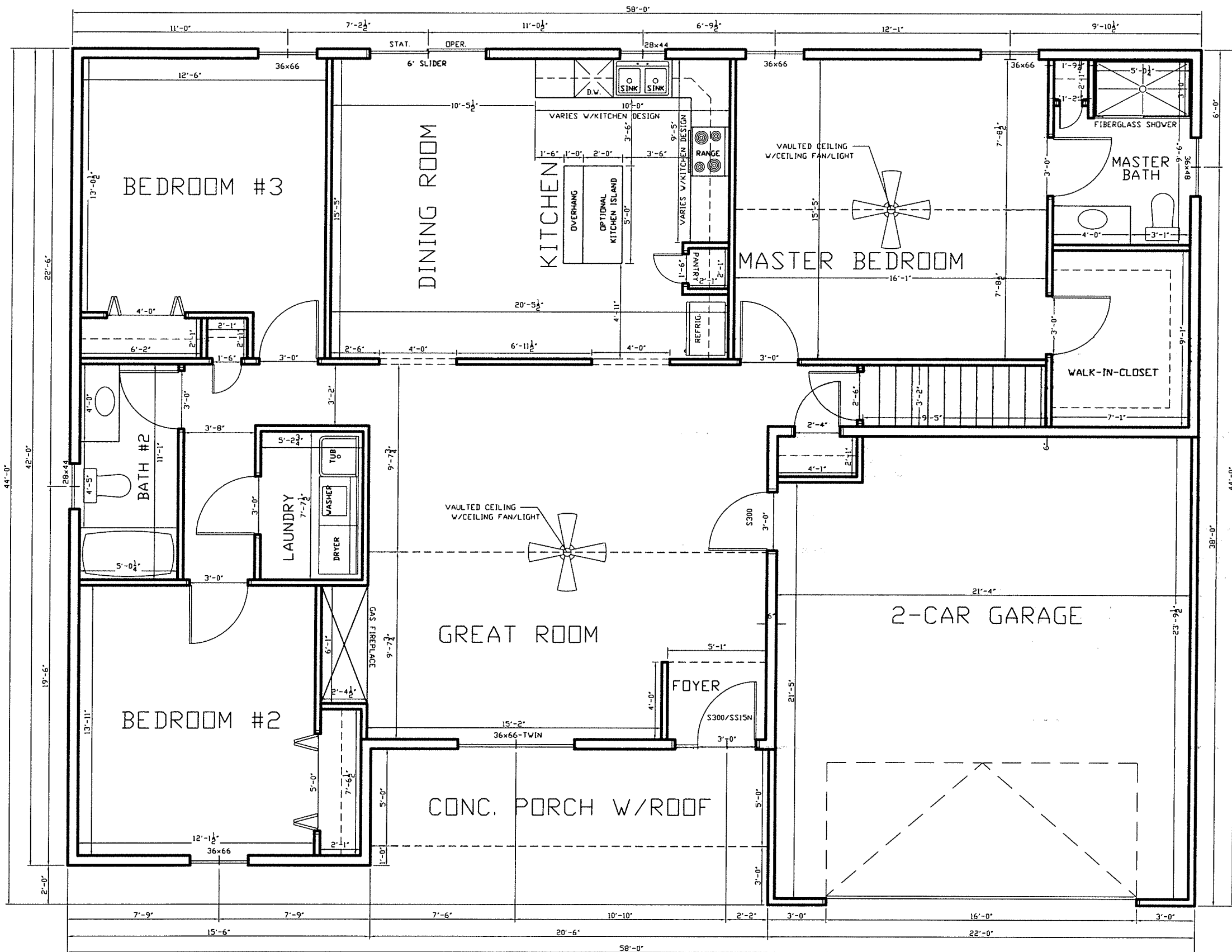


NOTE: ALL CONC. WALLS TO BE 10" UNLESS NOTED.

GARAGE RIGHT
SCALE: 1/4"=1'-0"

FOUNDATION PLAN

THE LILYFIELD RANCHER II BASEPLAN
HEIDELBERG CROSSING



NOTE: ALL EXTERIOR WALL DIMENSIONS ARE 6" UNLESS NOTED.
 ALL INTERIOR WALL DIMENSIONS ARE 3-1/2" UNLESS NOTED.

GARAGE RIGHT
 SCALE: 1/4"=1'-0"

FIRST FLOOR PLAN

THE LILYFIELD RANCHER V BASEPLAN
 HEIDELBERG CROSSING
 1842 SQ. FT. FIRST FLOOR: