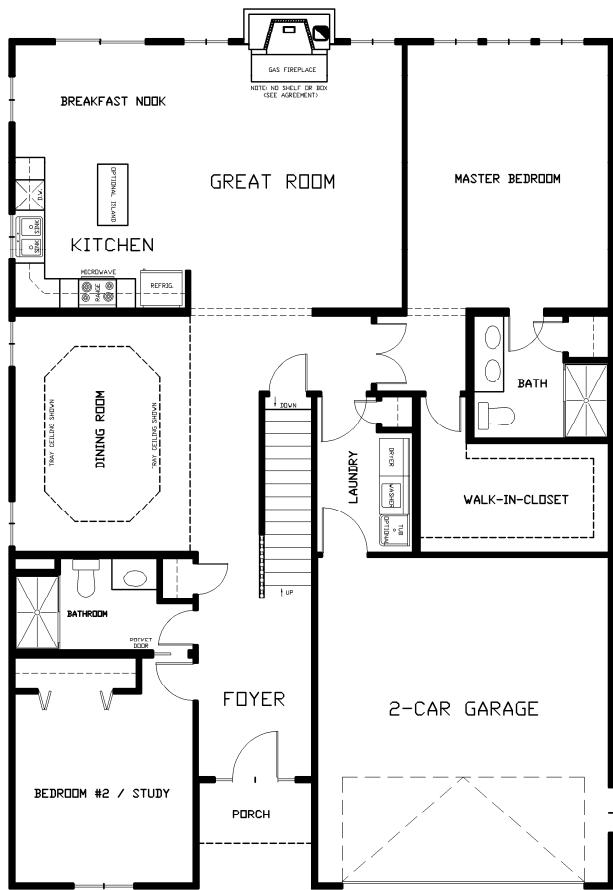


# FRONT ELEVATION

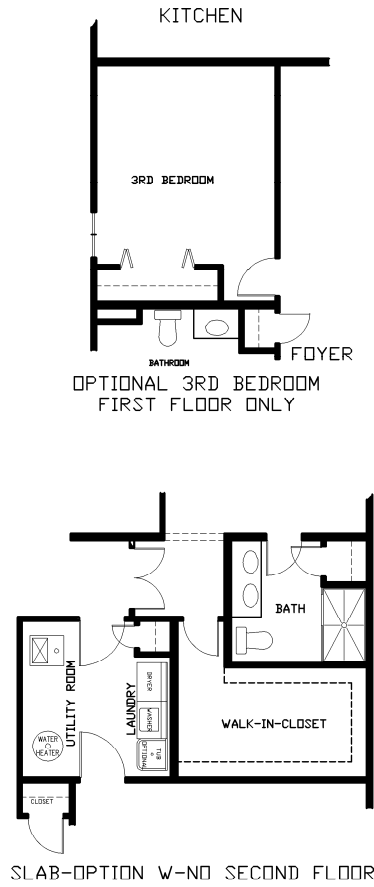
MILFORD BASEPLAN  
GARAGE RIGHT

NOTE: UPGRADED DORMERS SHOWN ARE \$5,000.00 ADDITIONAL

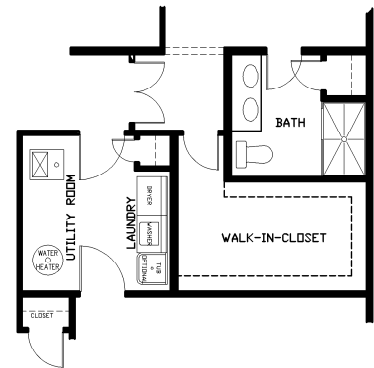


## FIRST FLOOR PLAN

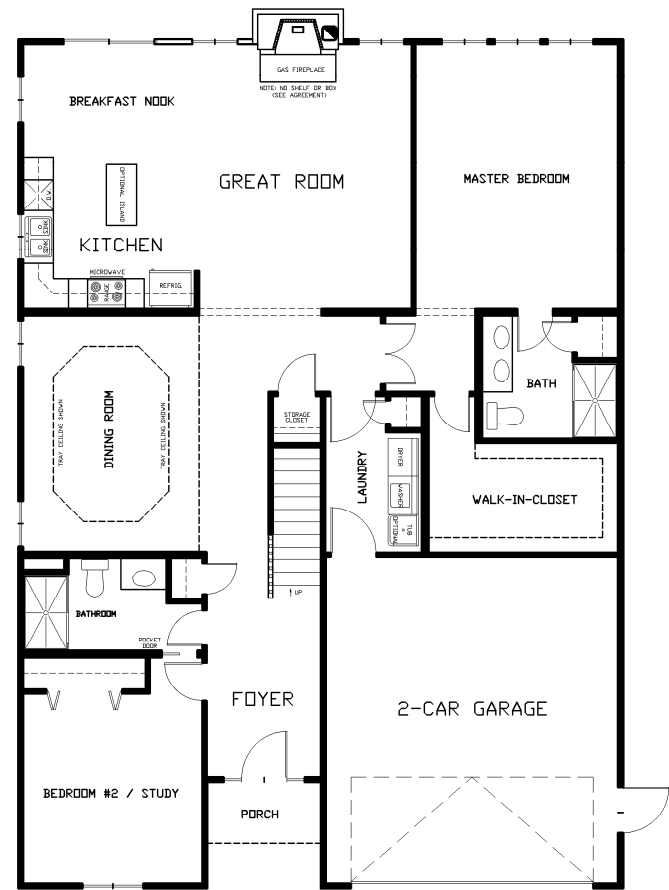
THE KENTON IV BASEPLAN  
 FIRST FLOOR PLAN W-BASEMENT  
 GARAGE RIGHT



OPTIONAL 3RD BEDROOM  
 FIRST FLOOR ONLY

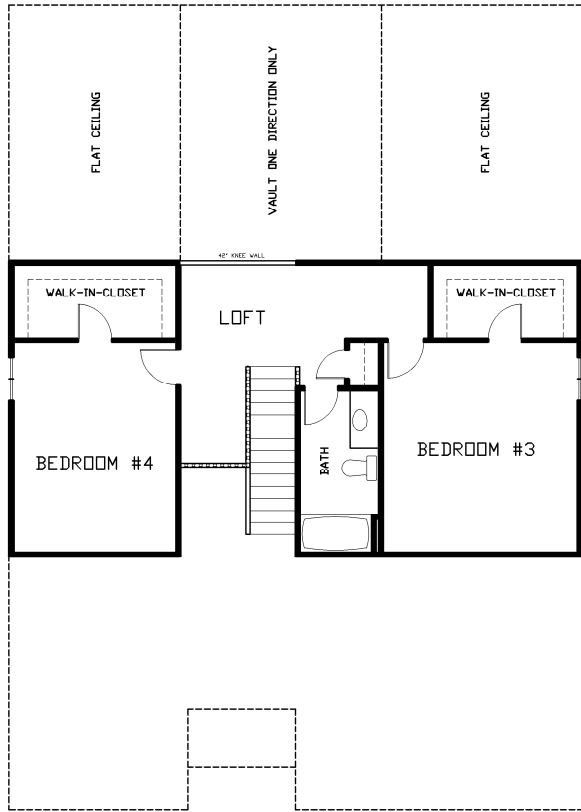


SLAB-OPTION W-NO SECOND FLOOR



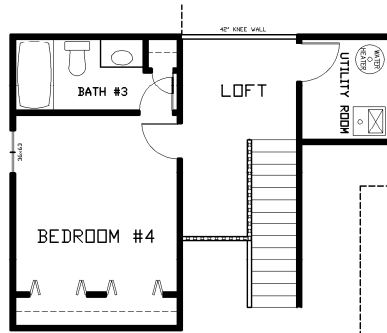
## FIRST FLOOR PLAN

THE KENTON IV BASEPLAN  
 FIRST FLOOR PLAN W-SLAB  
 GARAGE RIGHT

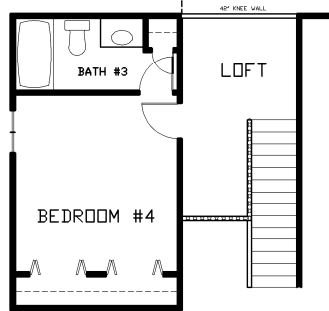


**SECOND FLOOR PLAN**

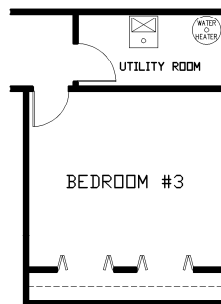
THE KENTON IV BASEPLAN  
 OPTIONAL FULL SECOND FLOOR PLAN  
 750 SQ. FT.  
 GARAGE RIGHT



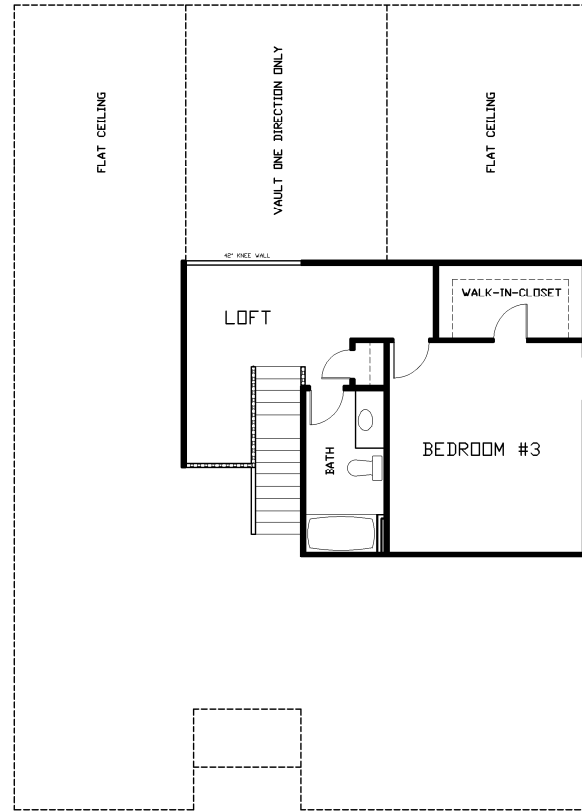
OPTION W-SLAB AND PARTIAL SECOND FLOOR  
 390 SQ. FT.



OPTION V-BASEMENT AND PARTIAL SECOND FLOOR  
 340 SQ. FT.



OPTION V-SLAB AND FULL SECOND FLOOR  
 SQ. FT. SAME AS FULL SECOND FLOOR



**SECOND FLOOR PLAN**

THE KENTON IV BASEPLAN  
 LARGER OPTIONAL PARTIAL SECOND FLOOR  
 510 SQ. FT.  
 GARAGE RIGHT

KITCHEN